



# Wardian Court

IKATE ELEGUSHI, LAGOS NIGERIA

---



Enjoy the fusion of functionality and aesthetics, where form and function unite to  
create spaces that inspire and uplift.

# Wardian *Court*

## *Welcome*

Wardian Court will be the first of its kind in Ikate,  
a true beauty that embraces Elevated Luxury.

Wardian Court invites you to discover a realm of unparalleled  
beauty and sophistication. Allow yourself to be captivated by  
the allure of this extraordinary haven, where dreams come to life.

Wardian Court is made up of 27 terraces on over 3,000sqm of  
land with bespoke features such as an in-house lift, gym and  
an open terrace. This will be the first of its kind in Ikate,  
a true beauty that embraces Elevated Luxury.



# *Table of Content*

1

Introduction

---

---

2

Location

---

---

3

Features

---

---

4

The Building

---

---

5

The Spaces

---

---

6

Price on Offer

---

---

# Location

Wardian Court is located in Megamound Estate at Ikate, Elegushi.

This area has gained popularity among new homeowners due to its accessibility to Victoria Island and Ikoyi through the construction of a link bridge, as well as the renowned Elegushi Beach.

It is known for low population density and strong security, making it a preferred choice for home owners and investors.

---



# *a blend of ease and tranquility*

In this vibrant community, immerse yourself in a harmonious blend of convenience and tranquility. Discover a place where the pulse of urban amenities beats close by, yet the rhythm of serene surroundings offers a comforting embrace.

Every corner speaks of ease with essential amenities thoughtfully placed within reach, granting a seamless daily life. While proximity to bustling city centers beckons, the neighborhood remains a tranquil sanctuary, fostering a sense of peacefulness and solace.

Traverse through serene parks and verdant spaces, where nature whispers its calming symphony, providing a serene refuge amidst the urban landscape.

Here, a balanced lifestyle flourishes within a close-knit community where neighbors become friends, fostering a strong sense of unity and camaraderie.



# Explore the Neighborhood: Where Convenience Meets Serenity

Experience a neighborhood that blends convenience and calmness, Where amenities are within easy reach, making life effortless. Close to urban hubs yet far from hustle, a serene retreat, Tranquil parks and green spaces, offering peace on every street.

A balanced lifestyle awaits in this welcoming community, With quiet surroundings and a strong sense of unity. Discover the perfect harmony of convenience and serenity, A place where living is easy, fulfilling, and worry-free."



## Area Highlights

- Nike Art Gallery
- Gracias Hotel and Suites
- Amore Gardens
- La Vida Estate
- Leisure Sports Paintball
- Lekki gardens horizon heights
- Megamound Estate
- House on the Rock
- FoLiXx Lounge
- Domino's Pizza Agungi
- Mega Chicken Restaurants Ikate
- Next thought Creative Hub Limited
- Jakande Market
- Circle Mall



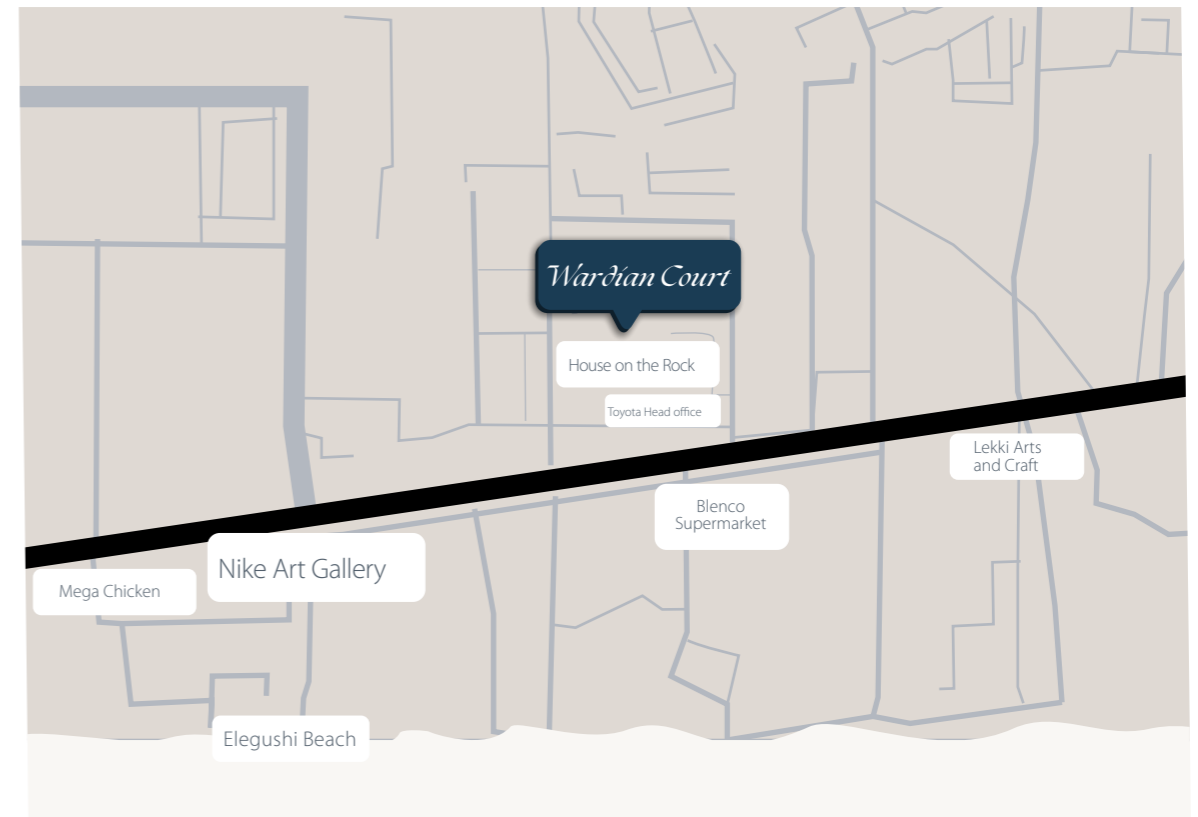
## Financial Services

- Zenith Bank
- Access Bank
- Fidelity Bank
- GTCO

# Landmark spots:

You can easily access the world of art and culture with the renowned Nike Art Gallery and Lekki Art Market, both just a 10-minute drive away from Wardian Court.

Wardian Court is Megamound Estate at Ikate, Elegushi, which is part of the Lekki Phase 2 scheme along the Lekki-Epe expressway.



# Synthesizing Convenience and Serenity:





*Tailored to Your  
Unique Tastes  
and Needs*

# Features

Savor the exclusivity of our concierge services, where personalized attention meets your every need, ensuring a seamless and luxurious living experience.

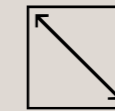
Delight in the culinary delights of gourmet kitchens and elegant dining spaces, perfect for hosting unforgettable gatherings and cherished moments.

At our abode of luxury, leisure, and comfort intertwine, crafting an unparalleled lifestyle that indulges your senses and fulfills your aspirations. Experience the epitome of premium living where every amenity is meticulously crafted to elevate your existence.

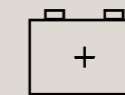
## *Indulge in Premium Living: Elevate Your Lifestyle with Our Amenities*



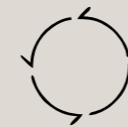
Fitted kitchen



High Ceiling



24/7 Electricity



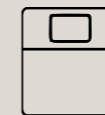
High speed internet



Parking slots per apartment



Full service facility management



Ensuite bedrooms



Private balcony



Private lift



24/7 security



Play Area



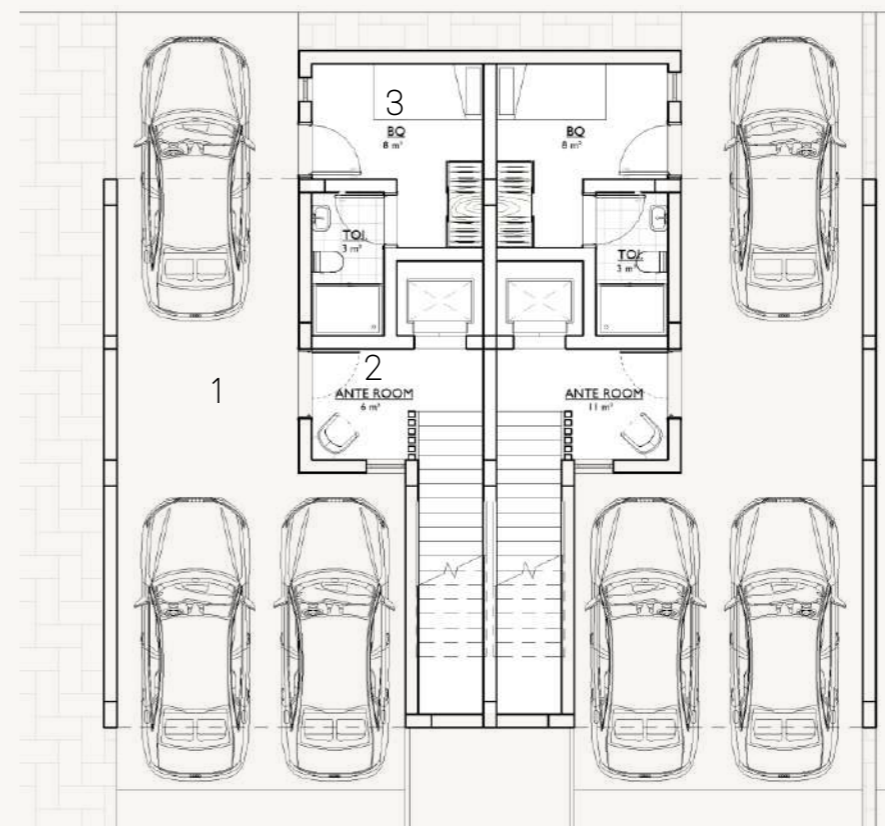


## The terraces:

The terraced living area spans three floors, and the fourth floor is designed to be functional. It features a separate living-dining area, four en-suite bedrooms, and an additional study/playroom. The top floor includes a private 25sqm terrace, ideal for hosting private parties.



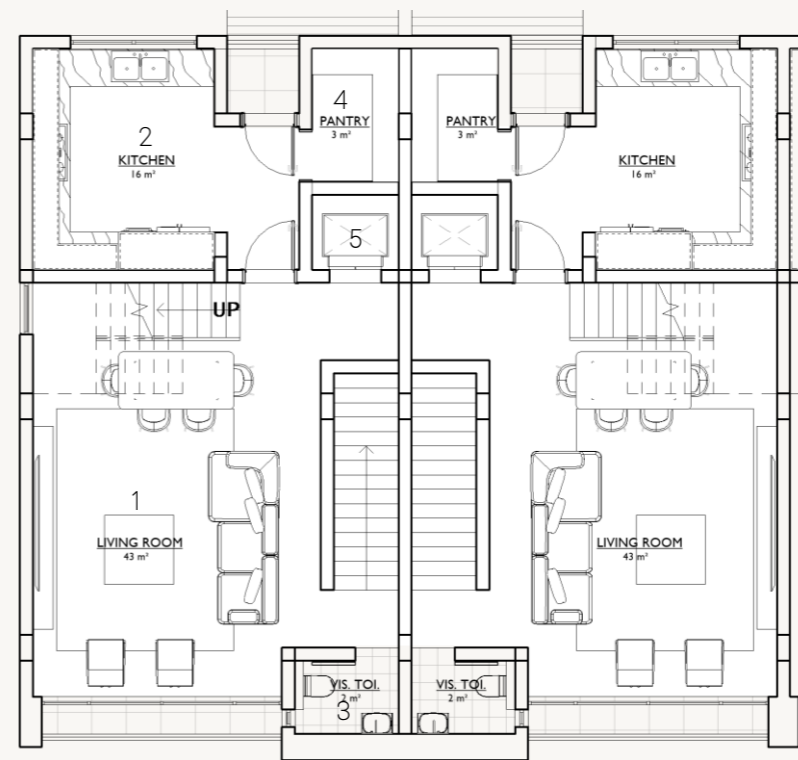
## Ground Floor



### FUNCTIONAL SPACES

- |              |          |
|--------------|----------|
| 1. Parking   |          |
| 2. Ante Room | - 11 Sqm |
| 3. BQ        | - 8 Sqm  |

## First Floor



### FUNCTIONAL SPACES

- |                     |          |
|---------------------|----------|
| 1. Living Room      | - 40 Sqm |
| 2. Kitchen          | - 16 Sqm |
| 3. Visitor's Toilet | - 2 Sqm  |
| 4. Pantry           | - 3 Sqm  |
| 5. Elevator         | - 3 Sqm  |

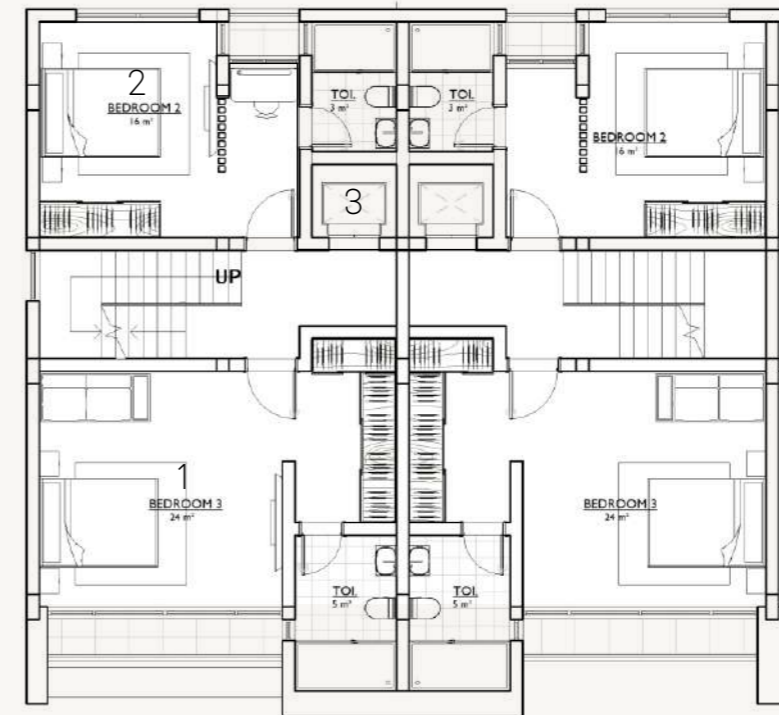


# The terraces:

With allotted parking space for 3 cars and a beautiful land scape, Wardian court is perfect home to entertain.

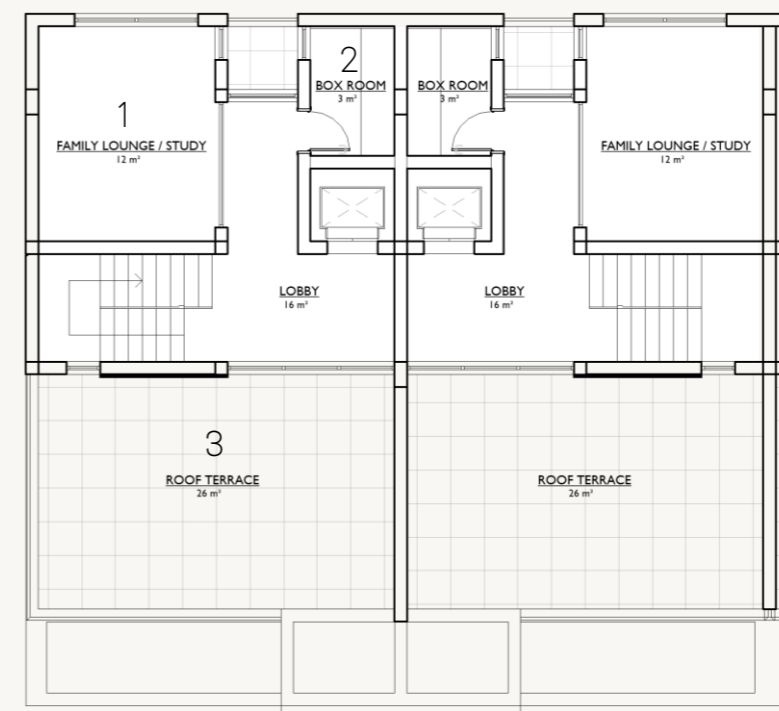


## Second Floor & Typical Third



FUNCTIONAL SPACES	
1. Madam BDRM	- 24 Sqm
2. Bedroom 2	- 16 Sqm
3. Elevator	- 3 sqm

## Fourth Floor



FUNCTIONAL SPACES	
1. Family Lounge	- 12 Sqm
2. Box Room	- 3 Sqm
3. Roof Terrace	- 25 Sqm



*Make timeless memories  
in a timeless structure*

---



## *The terraces:*

Wardian court is premium example of elevated luxury, with meticulously designed homes that combine traditional materials and a modern style. These homes feature spacious and well lit rooms for family gatherings and private activities. Highlights include a private gym, rooftop and private elevator connecting the 1st floor to the master suite on the 3rd floor



*Living in Harmony:  
Embrace Your Ideal  
Neighbourhood*

Discover a community that fosters a sense of belonging,  
where neighbours become friends and memories  
are woven into the very fabric of the structure.





---

# *Ambience*

Contemporary, Clean and Functional

---

# Style

Enjoy the fusion of functionality and aesthetics, where form and function unite to create spaces that inspire and uplift.



# Comfort

This area has gained popularity among new homeowners due to its accessibility to Victoria Island and Ikoyi through the construction of a link bridge, as well as the renowned Elegushi Beach.

It's known for low population density and strong security, making it a preferred choice for international celebrities.

---



*Make timeless memories  
in a timeless structure*

---



*Reach Out and Discover  
Your Perfect Home:  
Our Team Is Here for Your  
Neighbourhood*

Megamound Place 14, Muri Okunola Street,  
Victoria Island, Lagos.

Info@megamound.com

**07074908155**

**07074908151**

