



THE
PORTRAIT

ADMIRALTY ROAD, LEKKI PHASE I, LAGOS.

*Where Location
Meets Excellence*

CONTENT

01	INTRODUCTION
02	LOCATION
03	FEATURES
04	DESIGN AND PLANS MAISONETTE APARTMENT PENTHOUSE
05	LIFESTYLE AND COMMUNITY
06	CTA





THE PORTRAIT

INTRODUCTION

EMBARK on a journey of timeless elegance and luxury at The Portrait, where prestige is woven into every detail

Step into The Portrait and experience an elevated sense of grandeur across 8 floors housing 37 exquisite residences designed for modern living. More than just a home, it's a sanctuary for like-minded individuals who value sophistication and a dynamic lifestyle.

Discover spacious rooms filled with natural light and contemporary finishes, each offering a canvas for your personal touch. The Portrait is where every detail is thoughtfully curated to elevate your lifestyle and create priceless memories with loved ones.

Immerse yourself in the life offered at The Portrait, where each day brings new experiences and every moment tells a beautiful story. Welcome Home!

LOCATION

DISCOVER the prime location of the Portrait nestled in the heart of Admiralty Road, Lekki.

The Portrait, located on Admiralty Road in Lekki, combines urban convenience with tranquility. This vibrant neighborhood features attractions like Bay Lounge, Bayview Resorts, Admiralty Mall, and more, providing easy access to entertainment and daily necessities.

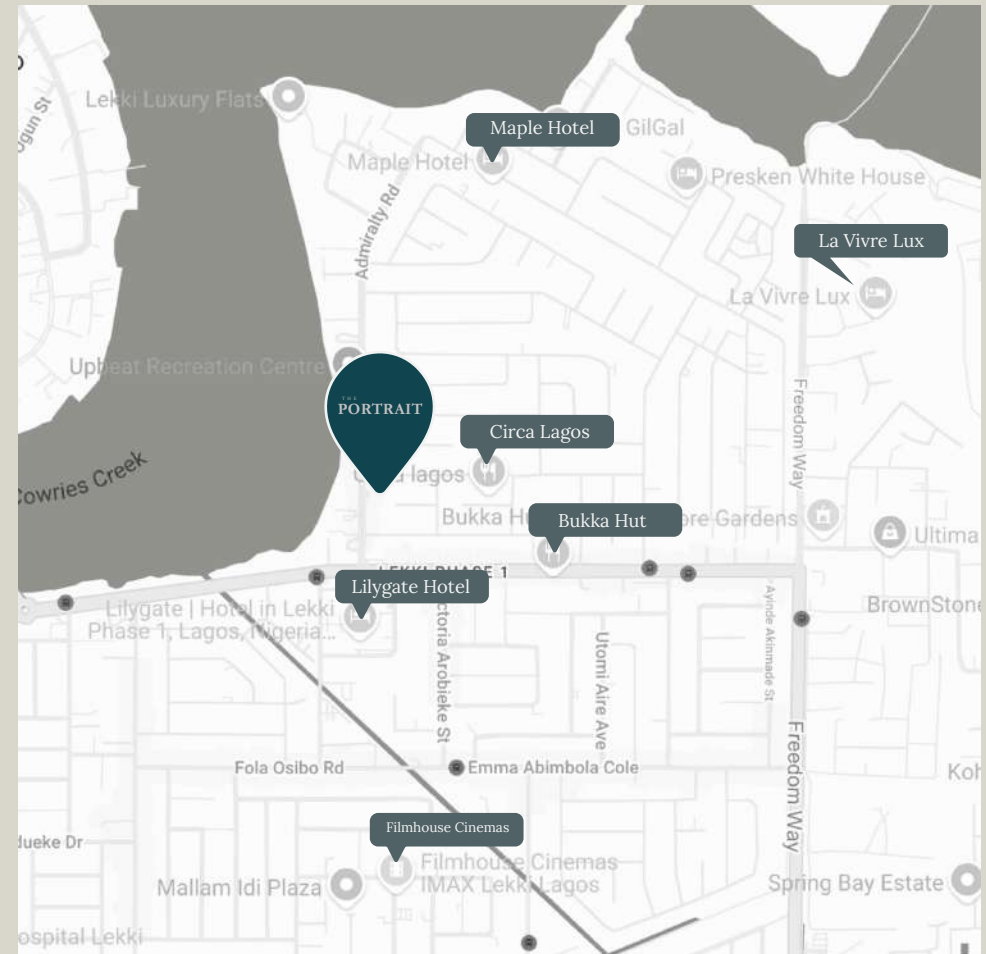
With convenient access to main roads and highways, commuting is effortless. Experience the best of Lagos living at The Portrait, where comfort meets city life.

Area Highlights

Admiralty Mall
Circa Lagos
Bukka Hut Suya
Filmhouse Cinemas IMAX
Lilygate Hotel
Harvesters International Christian Church
Maple Hotel
Upbeat Recreation Centre
La Vivre Lux
Prince Ebeano Supermarket
Bodyline Fitness & Gym
Ellyxville Hotel
Parktonian Hotel
Black Bell Restaurant
Bay Lounge

Financial Services

Zenith Bank
Access Bank
Fidelity Bank
GTBank
Globus Bank



*Synthesizing Excellence
& Location*

FEATURES

EXPERIENCE unparalleled amenities designed for your comfort, Security and enjoyment

There is more than meets the eye when it comes to our amenities. Host unforgettable gatherings on your private rooftop terrace, or enjoy a blockbuster movie experience in your very own indoor cinema exclusive to the penthouse level.

At The Portrait, every amenity has been thoughtfully curated to create long-lasting memories for you and your loved ones.



Indoor Cinema



Car Park



Rooftop Terrace



Ensuite Bedrooms



24/7 Electricity



Elevator



24/7 Security



Swimming Pool



Gym





DESIGN & PLANS



3 BEDROOM APARTMENT

UNWIND in our meticulously designed 3-bedroom apartments

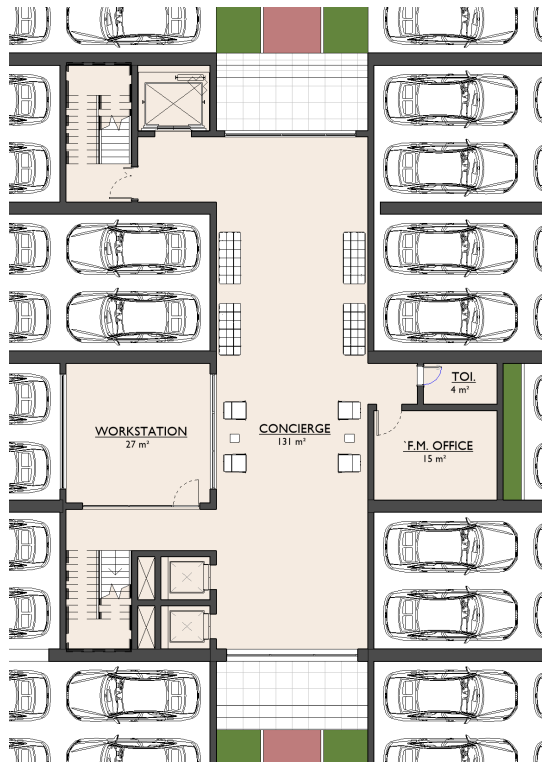
Step into a world of luxury with our 3-bedroom **ensuite** apartments, where comfort meets sophistication. Each apartment boasts a spacious **master bedroom** spanning 36sqm complete with a closet and a small balcony terrace, perfect for unwinding. Imagine **soaking up the sun with your favourite book on your swing chair** while enjoying the **breathtaking view of Lagos**.

With a combined area of **60 square meters** the **living room and dining area** provide plenty of space for entertaining and relaxing. Every feature has been thoughtfully designed with your comfort in mind, including a **dedicated Boys' Quarters (BQ)**, a **visitor's restroom**, and modern fittings and finishes all round. Plus, you'll enjoy the convenience of **two parking spaces**, ensuring hassle-free living in the heart of the city.

FLOOR PLAN

3-Bedroom Apartment

Ground Floor



FUNCTIONAL SPACES

Workstation	- 27sqm
Concierge	- 131sqm
F.M Office	- 15sqm
Toilet	- 4sqm

First Floor



FUNCTIONAL SPACES

Living Room	- 60sqm	Bedroom 1	- 22sqm
Kitchen	- 23sqm	Bedroom 2	- 20sqm
Master Bedroom	- 36sqm	Toilet	- 4sqm
Lobby	- 10sqm	Toilet	- 5sqm
Pantry	- 5sqm	BQ & Toilet	- 9sqm



Interior - Bedroom Space



3 BEDROOM MAISONETTE

Unparalleled Comfort in our
elegant 3-bedroom maisonettes

Experience modern living in our three-bedroom ensuite maisonettes. The first floor includes a spacious living and dining area, a fully equipped kitchen, two parking spaces, and a Boys' Quarters.

The second floor features a master bedroom and two additional bedrooms, each with ensuite bathrooms, plus a box room and a private balcony terrace with stunning views.

FLOOR PLAN

3-Bedroom Maisonette

First Floor



FUNCTIONAL SPACES

Living Room	- 50sqm
Kitchen	- 23sqm
Lobby	- 19sqm
Pantry	- 5sqm
Visitor's Toilet	- 3sqm

Second Floor



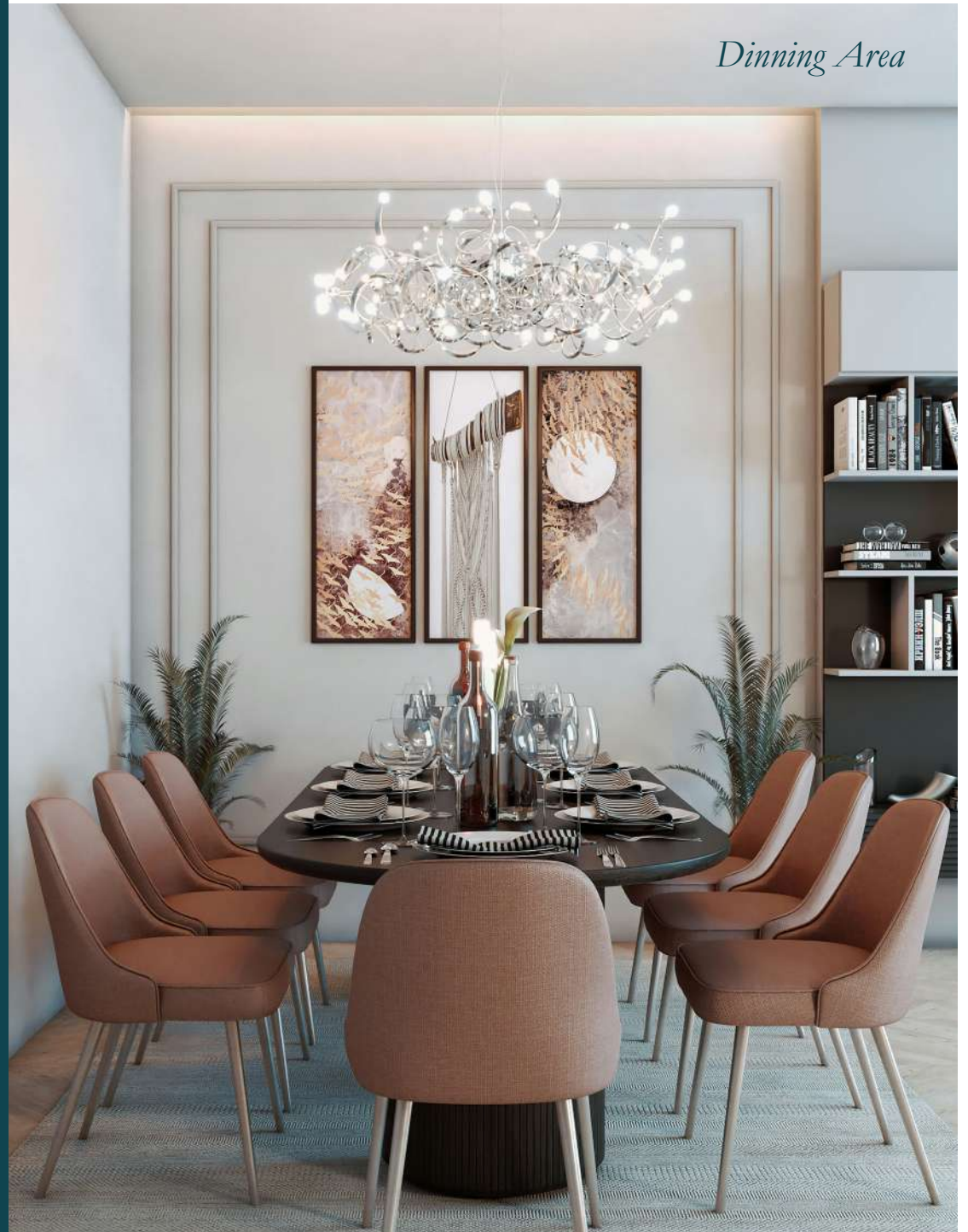
FUNCTIONAL SPACES

Bedroom 1	- 25sqm
Closet	- 4sqm
Toilet 1	- 4sqm
Bedroom 2	- 26sqm
Toilet 2	- 4sqm
Bedroom 3	- 25sqm
Toilet 3	- 4sqm
Box Room	- 4sqm

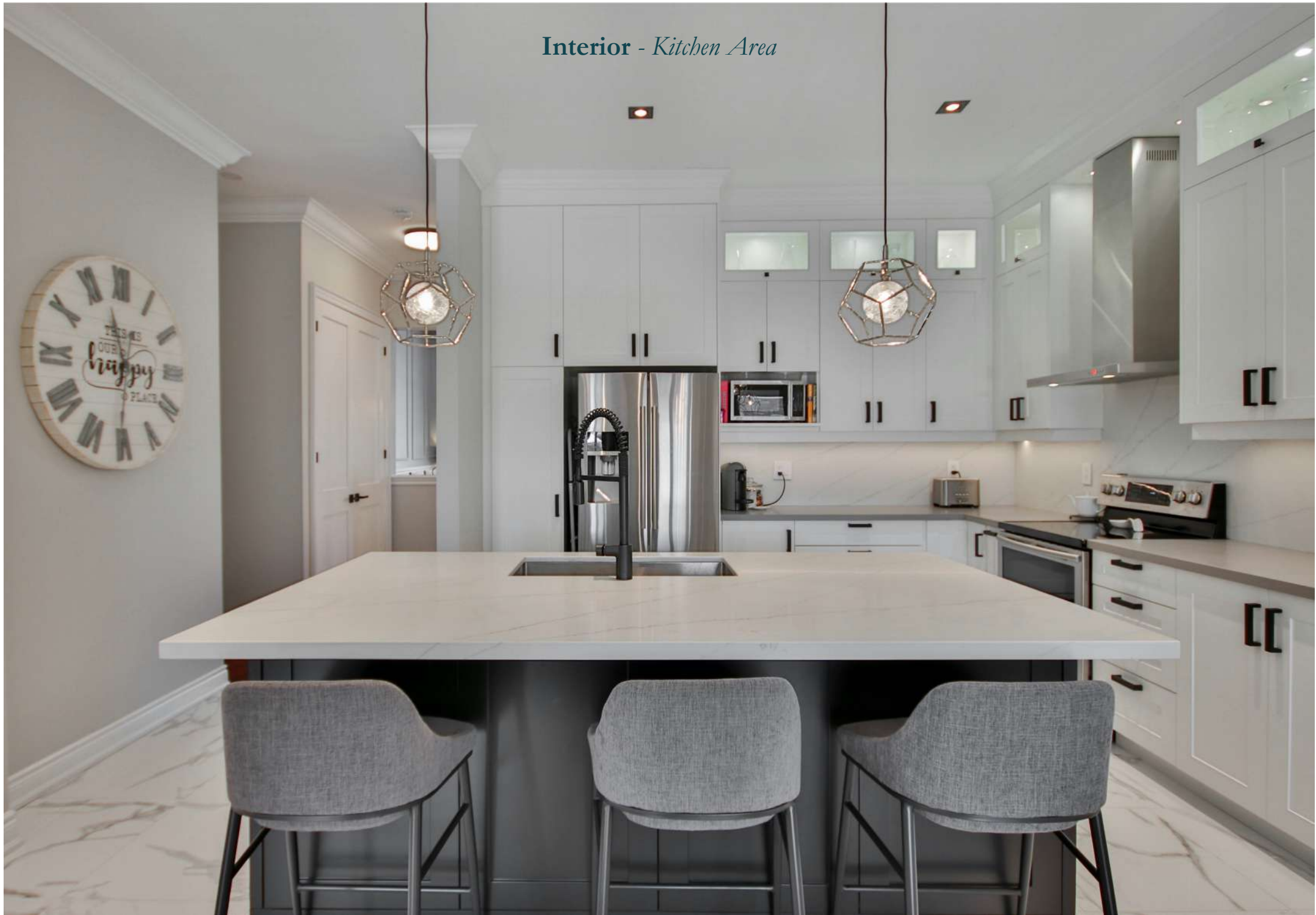
Anteroom



Dinning Area



Interior - Kitchen Area





4 BEDROOM PENTHOUSE

ASCEND to New Heights of Luxury in
Our Upscale 4-Bedroom Penthouses.

Experience Luxury Living in Our Stunning Penthouse

Discover our stunning two-floor penthouse with breathtaking views and premium amenities.

The first floor features a spacious living area, a 69 sqm dining area, a fully-equipped kitchen, and an ensuite bedroom. The second floor boasts a luxurious master bedroom with a jacuzzi, two additional bedrooms with ensuite bathrooms, and a private balcony.

Enjoy gatherings on the rooftop terrace and exclusive access to an indoor cinema. With three dedicated parking spaces, this penthouse is perfect for those who seek the ultimate in luxury living.
YOUR NEW HOME AWAITS!

FLOOR PLAN

4-Bedroom Penthouse

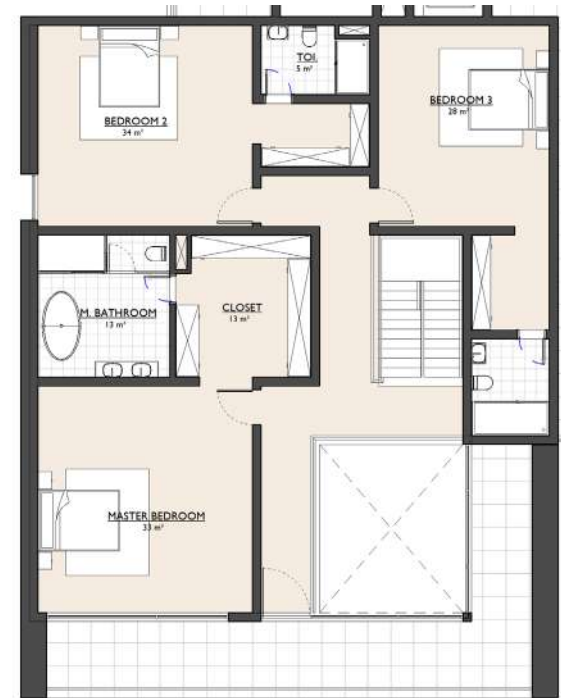
Seventh Floor



FUNCTIONAL SPACES

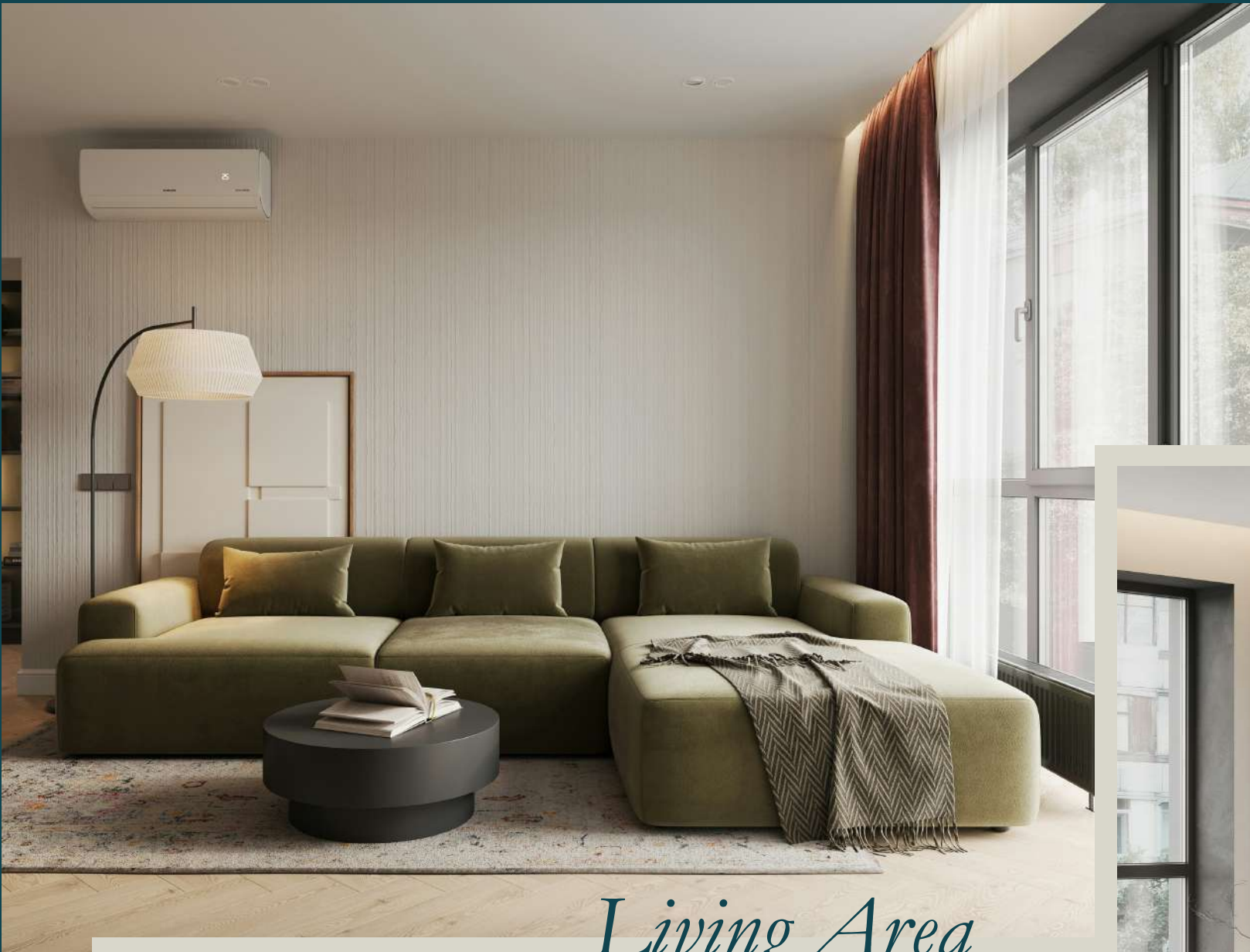
Living Room	- 69sqm	Pantry	- 5sqm
Ante Room	- 8sqm	Bedroom 1	- 27sqm
Visitor's Toilet	- 2sqm	Toilet	- 5sqm
Lobby	- 16sqm	BQ & Toilet	- 9sqm
Box Room	- 3sqm		
Kitchen	- 23sqm		

Eighth Floor

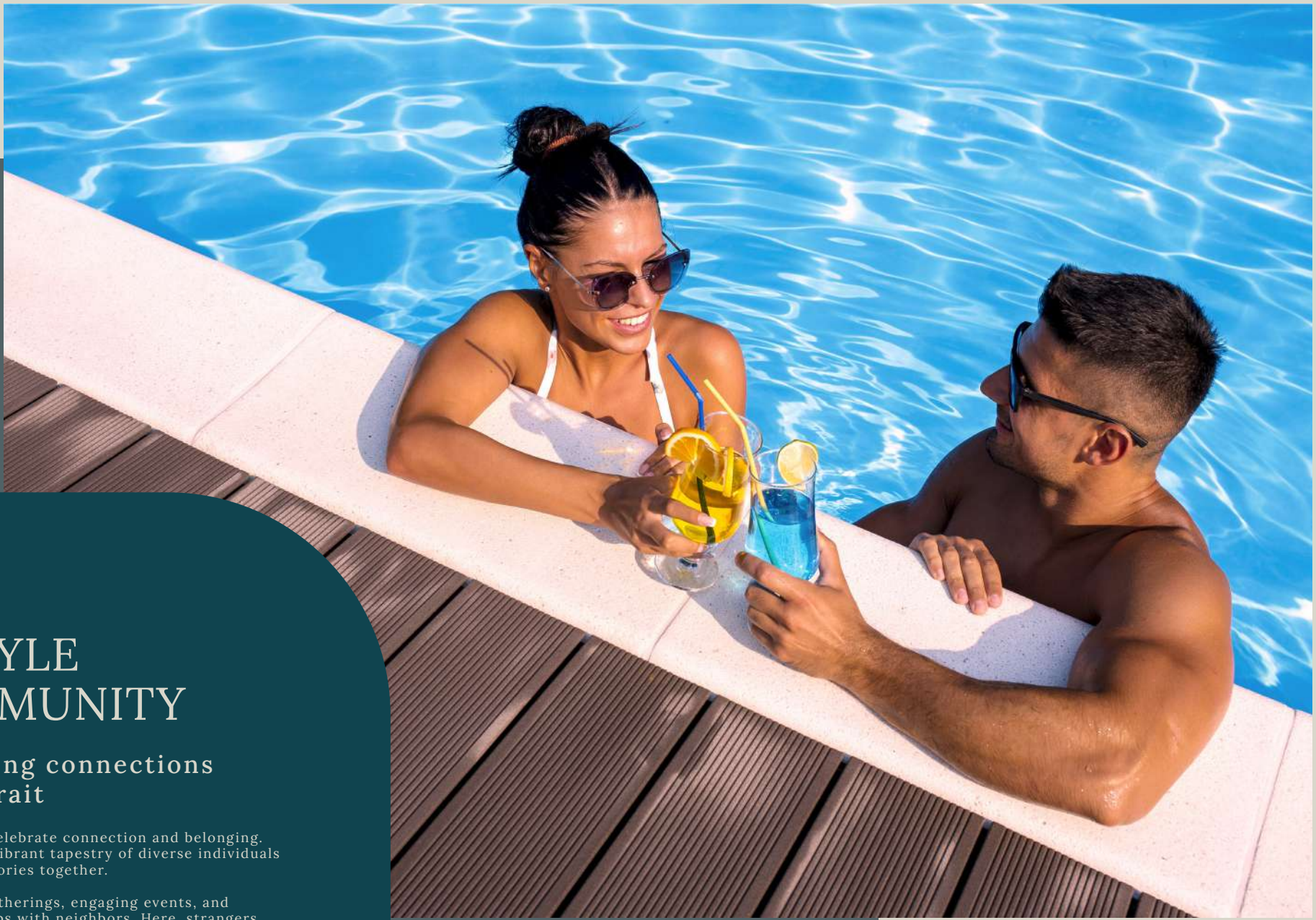


FUNCTIONAL SPACES

Master Bedroom	- 33sqm
Closet	- 13sqm
Toilet	- 13sqm
Bedroom 2	- 34sqm
Toilet	- 5sqm
Bedroom 3	- 8sqm



Living Area



LIFESTYLE & COMMUNITY

FORGE lasting connections at The Portrait

At The Portrait, we celebrate connection and belonging. Our community is a vibrant tapestry of diverse individuals creating lasting memories together.

Picture lively pool gatherings, engaging events, and meaningful friendships with neighbors. Here, strangers become friends, and every interaction strengthens our sense of community. Embrace a lifestyle where neighbors feel like family. Welcome to The Portrait!



T H E
PORTRAIT

ADMIRALTY ROAD, LEKKI PHASE I, LAGOS.

Own Your Piece of Luxury!

Contact Us Today to
Schedule a Private Tour

Head-Office Address:
4 Muri Okunola Extension,
Muri Okunola Street, Off
Chief Yesufu Abiodun,
Oniru Road, Victoria Island,
Lagos.

Contact:
07074908153
07074908076

Website: www.megamound.com
Email: info@megamound.com

