

— THE —

CURVE

LASODE CRESCENT, VICTORIA ISLAND,
LAGOS



Experience the peak of modern Living at The Curve where architectural brilliance meets contemporary Luxury

TABLE OF

CONTENT



1. INTRODUCTION 01

2. LOCATION 03

3. AMENITIES 07

4. DESIGN AND FLOOR PLANS 11

a. 2-BEDROOM APARTMENT LAYOUT

b. 3-BEDROOM APARTMENT LAYOUT

5. TEAM 29

6. CONTACT NO 15

7. NOTES 20

WELCOME TO

THE CURVE!

Welcome to The Curve, an **architectural marvel** standing tall on **Lasode Crescent** in the prestigious and bubbling neighborhood of Victoria Island, Lagos. With **three (3) floors** of modern luxury and sophistication, The Curve offers a total of **nine (9) exclusive apartments**, each meticulously primed to epitomize modern living.

From the moment you arrive, you'll be captivated by the striking modern minimalist exterior, a testament to its unique design, featuring **stone walls** and **sleek white finishes** complemented by **sleek floor-to-ceiling windows** across all floors. The building boasts a unique **curved design** that creates a dynamic silhouette further enhanced by a green area that adds a touch of natural beauty to the timeless structure.

Inside, **contemporary fittings and finishes adorn** every corner, creating a harmonious blend of style and functionality. Each apartment features **expansive windows** that bathe the living space in **natural light** creating a bright and airy atmosphere. **High-end finishes** like **Porcelain tiled floors** and **granite countertops** create a luxurious feel, while **sleek fixtures** and a **neutral color theme** offer a timeless elegance. The curve boasts bespoke features and amenities, including a **state-of-the-art gym**, **ample parking space**, **round-the-clock security**, **concierge service**, **24/7 power provision** and a skylight that provides natural lighting to all the apartments.

The Curve achieves the perfect blend of **minimalism**, **modernism** and **Sophistication**, setting a new standard for luxury living in Victoria Island. Come with us on a journey of modern elegance and unparalleled comfort at The Curve - Where every detail is designed to elevate your lifestyle.



LOCATION

Prime Location in the Serene Lasode Crescent,
Victoria Island.

Nestled in the Peaceful Neighbourhood of Lasode Crescent, The Curve enjoys a prime location in the heart of Victoria Island, Lagos. Surrounded by a wealth of amenities and attractions, residents of The Curve are treated to a lifestyle of convenience and luxury.



EXPLORE THE NEIGHBORHOOD: WHERE CONVENIENCE MEETS SERENITY

Nearby highlights include the renowned **Medplus Pharmacy** and **Coptic Hospital**, ensuring easy access to healthcare services. For those seeking relaxation and rejuvenation, Triayu VI and Oma The Spa offer a tranquil retreat from the bustling city life. Shopaholics will delight in the proximity to Alara, while food and entertainment enthusiasts can indulge their taste buds at RSVP, Eric Kayser VI and Slow Restaurant.



AREA HIGHLIGHTS

Medplus Pharmacy

Coptic Hospital

Triayu VI

Oma

Alara

RSVP

Eric Kayser VI

Slow Restaurant

Yenwa Art Gallery

Miliki

Global Harvest Church



FINANCIAL SERVICES

Fidelity Bank,

Stanbic IBTC

Zenith Bank

LANDMARK SPOTS:

Art lovers will find inspiration at Yenwa Art Gallery and Miliki while Fidelity Bank, Stanbic IBTC, Zenith Bank and Global Harvest Church provide additional convenience to residents. With such a vibrant array of amenities at your fingertips, living at The Curve promises an unparalleled urban experience in the heart of Victoria Island.



INDULGE IN PREMIUM LIVING:
ELEVATE YOUR LIFESTYLE WITH
OUR AMENITIES

AMENITIES:

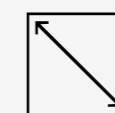
Elevate your lifestyle

Step into The Curve and be greeted by a sense of sophistication and comfort, where exceptional amenities cater to your every need, from **24/7 electricity** for peace of mind to state-of-the-art fitness facilities and **Lush greenery** that Promises to elevate your mood.

The property boasts a **generator house** that ensures round-the-clock electricity supply. Each apartment is thoughtfully designed with expansive **floor-to-ceiling windows**, allowing for proper ventilation and the entrance of natural light, creating bright and airy living spaces. Step outside onto your **private balcony terrace**, where you can relax and unwind while enjoying stunning views of the surrounding area.



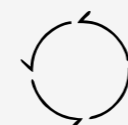
Fitted kitchen



High Ceiling



24/7 Electricity



High speed internet



Parking slots per apartment



Full service facility management



Ensuite bedrooms



Private balcony



Lush Green



24/7 security



Play Area

AMENITIES:

Elevate your lifestyle

Our **state-of-the-art gymnasium** featuring deluxe equipment and bathed in ample natural light creates a motivating atmosphere for your workout session. With sufficient parking spaces for up to 15 vehicles for all residents, a dedicated facility management office, and round-the-clock security, your peace of mind is our top priority.

Whether you're relaxing in one of our stylishly designed apartments, unwinding after a long day in our elegantly designed concierge lounge offering a comfortable space to socialize with other residents or enjoying the communal spaces, every moment at The Curve is designed to enhance your lifestyle.

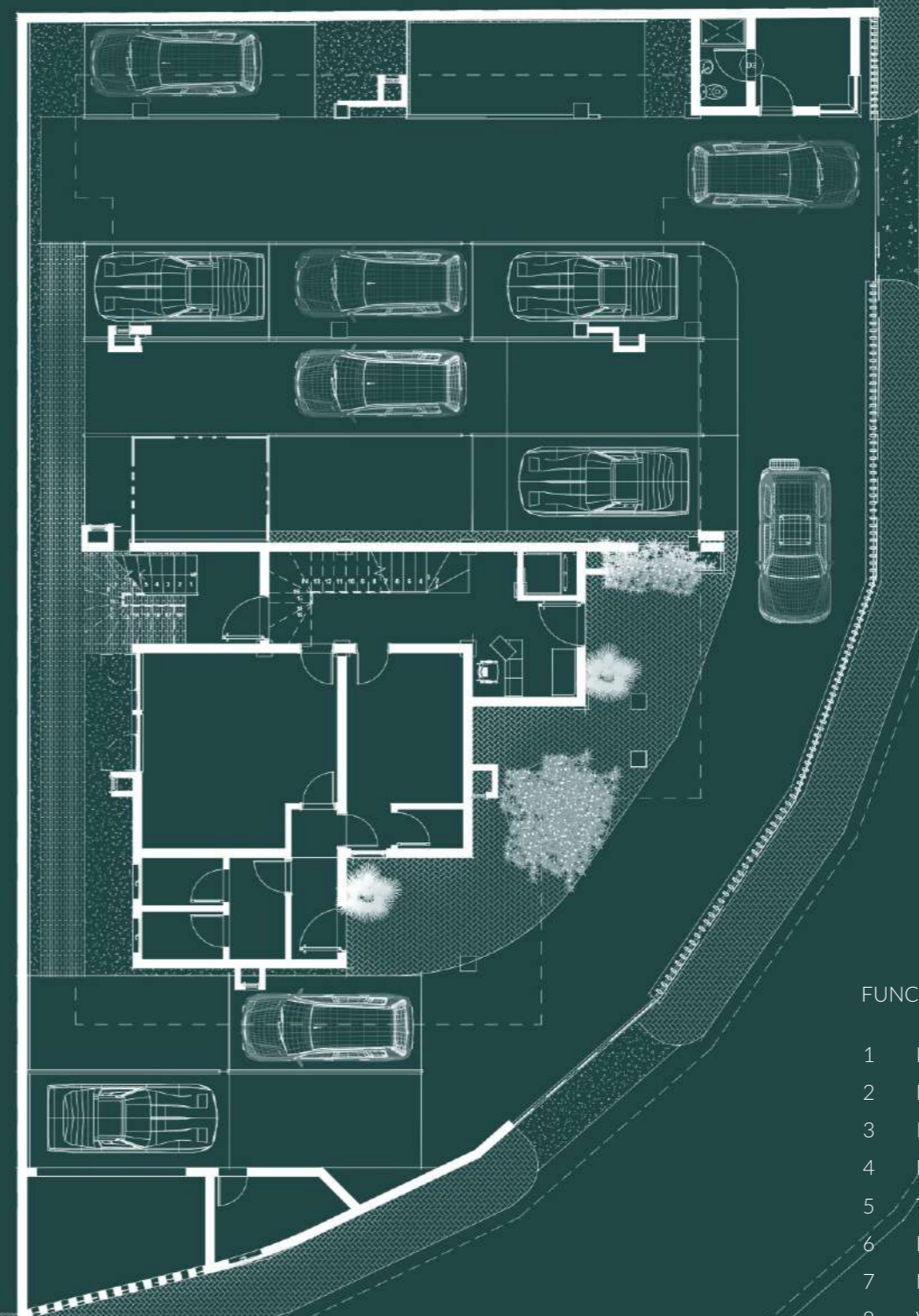




EACH THOUGHTFULLY DESIGNED APARTMENT FOSTERS
A SENSE OF PEACE AND COMFORT.

Design and floor plan

Discover your private haven by choosing from our 6 thoughtfully designed 2-bedroom or our 3 expansive 3-bedroom apartments with a Boys Quarter for extra convenience and functionality. Every residence fully embodies the sophistication and modernism of The Curve.



FUNCTIONAL SPACES

1	Living room	25sqm
2	Dining Area	30sqm
3	Kitchenette	4sqm
4	Bedroom	15sqm
5	Toilet	14sqm
6	Balcony	17sqm
7	Masters Bedroom	40sqm
8	Visitors Toilet	3sqm



LUXURIOUS 2-BEDROOM RETREATS WITH PRIVATE BALCONIES & BQ

The apartments at the curve are thoughtfully designed to suit your lifestyle needs. Every detail has been carefully curated to offer you a world of modern living. Each residence boasts modern finishes, Spacious layouts and stunning views of the environment.



2-BEDROOM LAYOUT



FUNCTIONAL SPACES

1	Living room	25sqm
2	Dining Area	30sqm
3	Kitchenette	4sqm
4	Bedroom	15sqm
5	Toilet	14sqm
6	Balcony	17sqm
7	Masters Bedroom	40sqm
8	Visitors Toilet	3sqm

INTERIOR RENDER

Living Room

This thoughtfully designed 2-bedroom residence offers a perfect sanctuary for modern professionals, small families or downsizers seeking a comfortable and stylish home.

This 2-bedroom Residence seamlessly integrates a spacious open-concept living/lounge area with a modern kitchen.

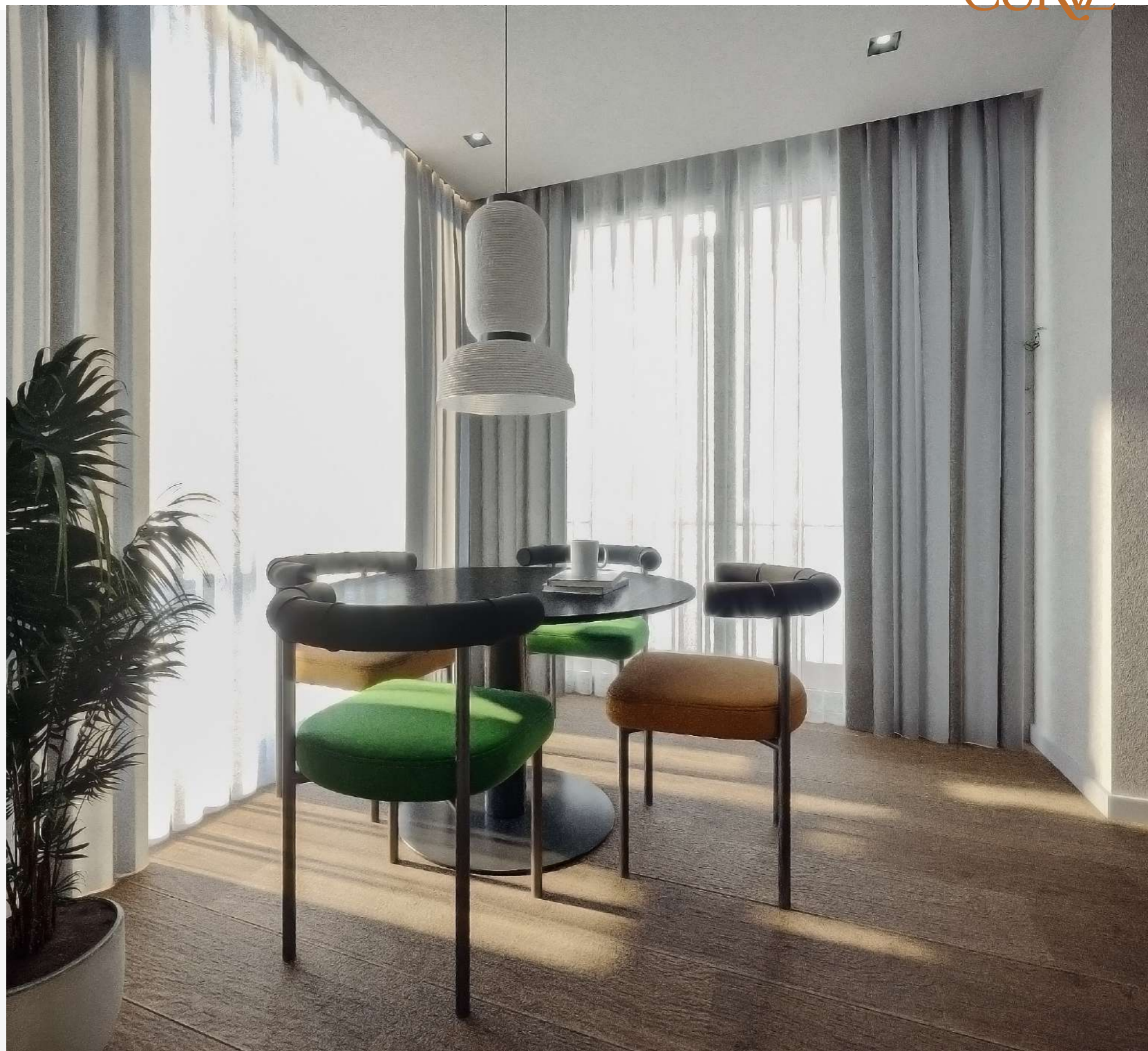


INTERIOR RENDER

Dining

This thoughtfully designed 2-bedroom residence offers a perfect sanctuary for modern professionals, small families or downsizers seeking a comfortable and stylish home.

This 2-bedroom Residence seamlessly integrates a spacious open-concept living/lounge area with a modern kitchen.





LUXURIOUS 3-BEDROOM RETREATS WITH PRIVATE BALCONIES & BQ

The apartments at the curve are thoughtfully designed to suit your lifestyle needs. Every detail has been carefully curated to offer you a world of modern living. Each residence boasts modern finishes, Spacious layouts and stunning views of the environment.



3-BEDROOM LAYOUT



FUNCTIONAL SPACES

1	Living room	25sqm
2	Dining Area	30sqm
3	Kitchenette	4sqm
4	Bedroom	15sqm
5	Toilet	14sqm
6	Balcony	17sqm
7	Masters Bedroom	40sqm
8	Visitors Toilet	3sqm



INTERIOR RENDER OF THE

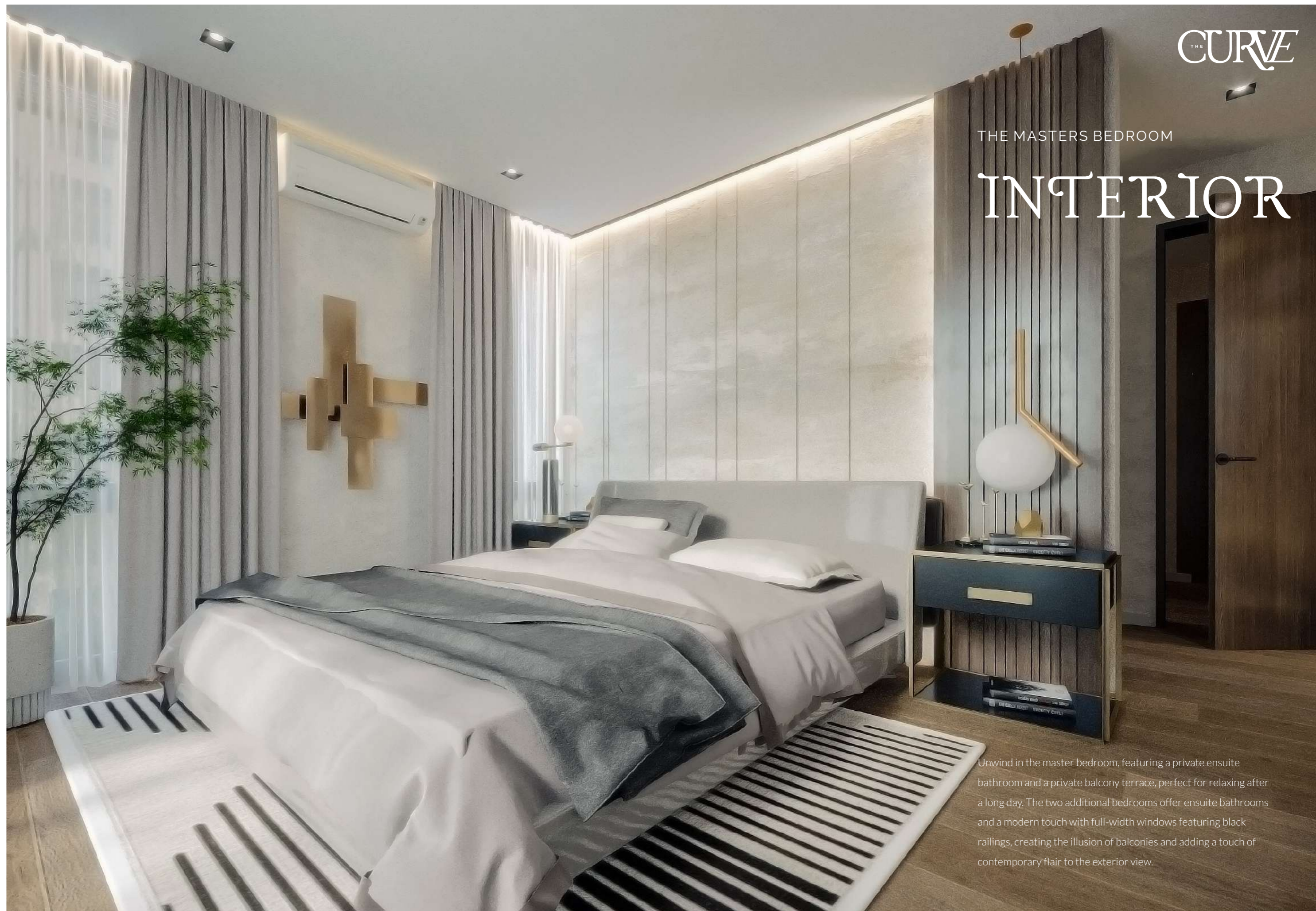
Living Room

This expansive 3-bedroom apartment offers a luxurious living experience perfect for families or those who desire extra space.

Immerse yourself in an open-concept living area, seamlessly blending a spacious living room with a contemporary kitchen and dining area. Large floor-to-ceiling windows bathe the entire space in natural light and provide excellent ventilation, perfect for clearing the air after cooking.

THE MASTERS BEDROOM

INTERIOR



Unwind in the master bedroom, featuring a private ensuite bathroom and a private balcony terrace, perfect for relaxing after a long day. The two additional bedrooms offer ensuite bathrooms and a modern touch with full-width windows featuring black railings, creating the illusion of balconies and adding a touch of contemporary flair to the exterior view.

INTERIOR RENDER OF THE
Kitchen

Immerse yourself in an open-concept living area, seamlessly blending a spacious living room with a contemporary kitchen and dining area. Large floor-to-ceiling windows bathe the entire space in natural light and provide excellent ventilation, perfect for clearing the air after cooking.

Step out onto the moderate-sized balcony terrace from the kitchen and dining area, perfect for enjoying a delightful evening meal outdoors or simply relaxing and taking in the surrounding views.

The modern kitchen, featuring high-end appliances and granite countertops, is a chef's dream, offering ample storage and functionality for creating culinary masterpieces.



YOUR PRIVATE SANCTUARY AWAITS,

where you can unwind and recharge after a long day.

Live The Curve Life Today! Contact us to schedule
a viewing and experience the Curve's exquisite
living spaces firsthand.



THE TEAM

Our Team Works For You!!

At the Curve, we understand the truly intricate art of creating exceptional living spaces which is why we have two leading Teams, Megamound and Arcs and Glass Teams collaborating to craft you a dream beyond your expectation.

We go beyond bricks and mortar-we help you create comfortable and functional dwelling spaces that inspire, elevate and perfectly embody your Vision.

The cohesive work of the Arcs and Megamound team creates a symphony of functionality, style and exceptional client satisfaction.

The Megamound's Team

We at Megamound, understand that the foundation of a perfect home starts with exceptional construction. That is why we exhibit a meticulous attention to details and an unwavering commitment to quality.

Our construction team brings a wealth of expertise to the table, consisting only of skilled professionals dedicated to exceeding expectations at every stage of the construction process. From the foundation to the final touches, we ensure that the best standards are met, guaranteeing a smooth and timely completion.

With us at Megamound, your dream home is more than just layers of brick, it is one that reflects your unique preferences. We are fully committed to ensuring you enjoy a seamless and stress-free experience. We don't simply build homes, we build trust.

The Arcs Team

Here, we believe a dream home starts with an inspired design. Our team is renowned for our innovative approach and our ability to turn your vision into a masterpiece. We don't stop at designing spaces, we create experiences. Our team is equipped with a deep understanding of modern trends and the process of making a functional and stylish home.

By seamlessly blending these elements with your unique needs, we not only create a space that looks good but one that also suits your lifestyle. We ensure your dream home reflects your aspirations for the future.

Our team is very intentionally involved in providing you with a flawless translation of your dreams, from the initial sketches to the Final Material selection.

We don't stop at blueprints, we are passionate about creating spaces that inspire and elevate you. Our innovative designs go beyond aesthetics, we are fully dedicated to crafting a home that is an extension of yourself. We create more than just living spaces, We create statements of Lifestyle

Together, the Megamound and Arcs and Glass team create living spaces that inspire, elevate and reflect your unique vision. Trust us to bring your dream home to life

TO DISCOVER MORE:

Megamound Place 14, Muri Okunola Street,
Victoria Island, Lagos.

Info@megamound.com



+234 8137376117

+234 8066532749



+234 702 500 4905

+234 818 833 5437